

## INTELLIGENT VIDEO DETECTION

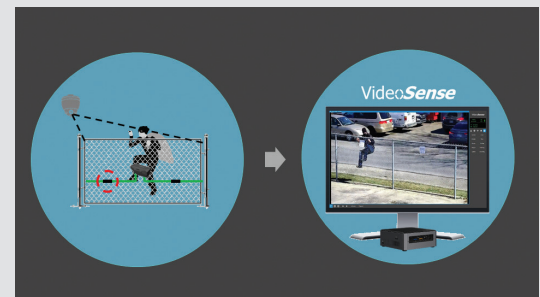
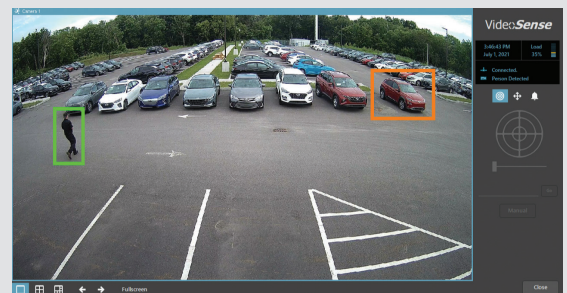


# VideoSense

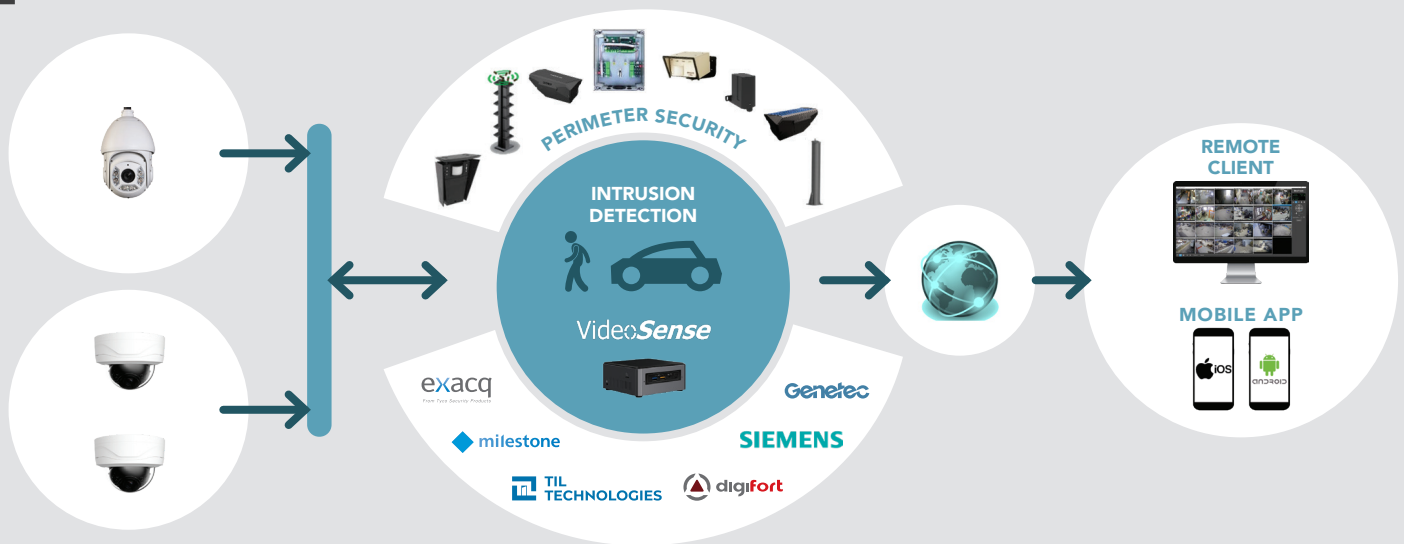
INTEGRATING VIDEO ANALYSIS  
WITH PERIMETER SECURITY

## OVERVIEW


- **Compact and low power** hardware
- **Easy to install** with pre-loaded licenses
- Advanced Detection by **Neural Networks**
- Integration with **Protech's Perimeter Security products**
- Integration with **VMS**
- **PTZ Tracking technology**



# VIDEOSENSE – INTERCONNECTION ARCHITECTURE



## TECHNICAL SPECIFICATIONS

	VIDEOSENSE		
	LITE	PRO	ENT
			
Model #	VLN-A	VPN-A	VEN-A
Nb. Cam. with video analytic (pre-loaded licenses)	3	6	9
Maximum storage capacity	Up to 4 TB		
I/O alarms	Up to 64 Inputs / 64 outputs on several IP I/O modules and/or up to 2 I/O through ONVIF IP cameras		
IP resolutions / Codec	Up to 12MPix / H.264 / H.265		
Protocols	ONVIF, RTSP, RTP, TCP, SMTP, HTTP		
Perimeter detection integration	<b>Protech Sorhea Maxibus: G-FENCE 3000, Solaris, Maxiris and others, G-FENCE 600/600Z and G-FENCE 2400</b>		
Dimensions / Chassis / Weight	117mm x 39mm x 112mm – 520 g (1.2 lbs) 4.6"(D) x 1.9"(H) x 4.4"(W)		
Electrical consumption	110-220VAC 90W	110-220VAC 90W	110-220VAC 120W
Operating temperature / Humidity	0°C to 50°C (32°F à 122°F) @ 80% (non-condensing)		
VMS compatibilities	Genetec, Milestone, Exacq, TIL, Digifort, Siemens		
3 <sup>rd</sup> party integration	SDK, ONVIF		
PTZ control	Auto-Tracking, detection of objects on presets, Call for presets on intrusion, Guard Tour		
Intrusion detection	MultiTrack, Pedestrian, vehicles, virtual intrusion areas		
Notification modes	IP to VMS, Relay outputs, emails, IP to CMS and PUSH messages to mobiles		
Remote access	Client application, web interface, mobile application (Android and iOS)		

## VIDEO INTRUSION DETECTION

Using a proprietary neural network Technology, VideoSense can perform video Intrusion detection with object classification on 9 cameras simultaneously.

## COMPACT HARDWARE

With its small size, the VideoSense device can be installed anywhere, typically on an alarm panel, close to a video surveillance switch or a perimeter security controller. Its low power requirement allows usage in a solar powered mobile system.

## EASY SET-UP

Thanks to pre-loaded licenses, Windows IOT and Discovery function, VideoSense is virtually plug-and-play!

## INTEGRATION

VideoSense has native integration with Protech's Perimeter security systems and many VMS systems.

## PTZ TRACKING

Whether using fixed camera or perimeter products for initial detection, VideoSense can control a PTZ to track and zoom on the object to capture enlarged images.