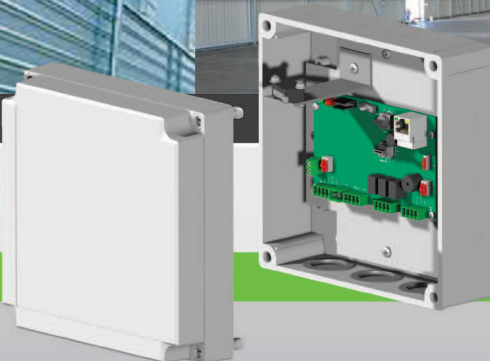




Perimeter Intrusion Detection Systems

## G-WALL

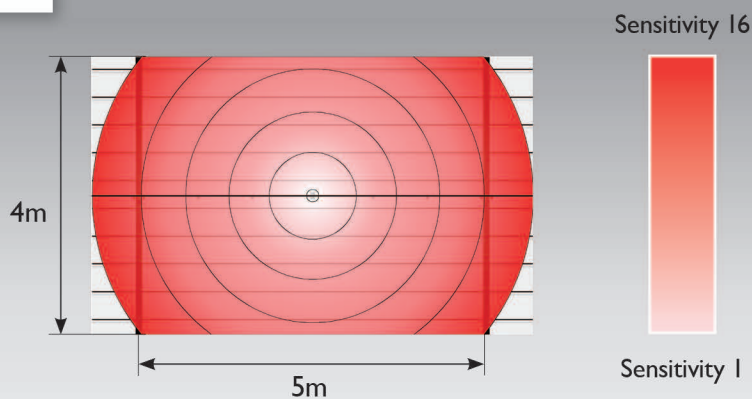
Wall-mounted Detection Cable



### Detection Reliability

G-Wall is a wall-mounted intrusion detection system that detects intrusion attempts such as hammering, cutting and ramming on a wide range of surfaces including concrete, brick and metal-sheet cladding.

G-Wall is designed to protect and prevent entry into warehouses and commercial buildings by detecting intrusion attempts caused by significant impacts to the outside surface.



The detection zone rises with the sensitivity

## Easy Installation and Modularity

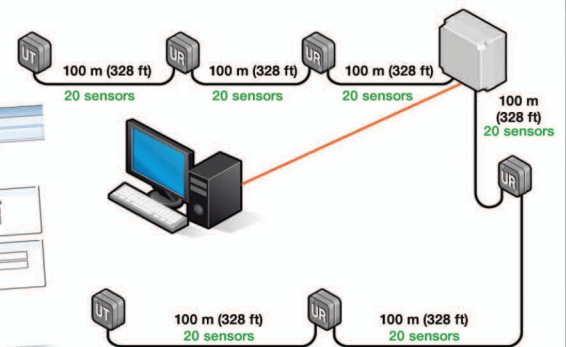
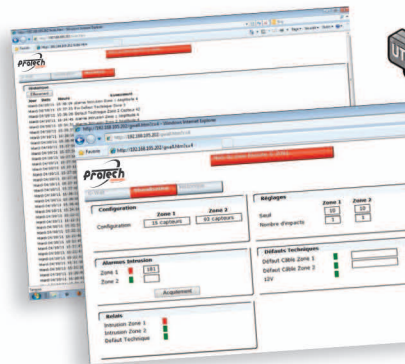
G-Wall is composed of accelerometer-based technology sensors, 1,968 ft. (600m) of detection cable and a control unit that can manage 2 zones of detection (1 per direction). Sensors are fixed directly onto the wall with brackets every 16.5 ft. (5m).

Each sensor manages a detection range of 16.5 ft. (5m) high by 16.5 ft. (5m) wide with adjustable sensitivity settings (1-16) per sensor to adapt to a range of surfaces.

Calibration is automatic allowing for quick and easy installation.

## Remote Maintenance and Configuration

Maintenance and configuration of the G-Wall system's control unit is easy through the web-based server. Operators/Installers can view and monitor alarm status (intrusion or technical) in real time. Details on the intrusion location and/or fault are accessible through the server. An integrated event log captures the last 1,000 events.



### Technical Specifications

Power supply	12 Vdc
Alarm information	Intrusion (per cable) Technical default (cable cut, power default) Tamper protection
Operating temperature	From - 40°F to 158°F (-40°C to +70°C)
System specification	600m of detection divided into 6 cables of 100m 1 Control Unit per system 20 sensors per 100m cable
Relay outputs	3

### Seal of the retailer

In order to continuously ensure the high standard of quality and performance of our products, we reserve the right to modify the present technical data without notification.

