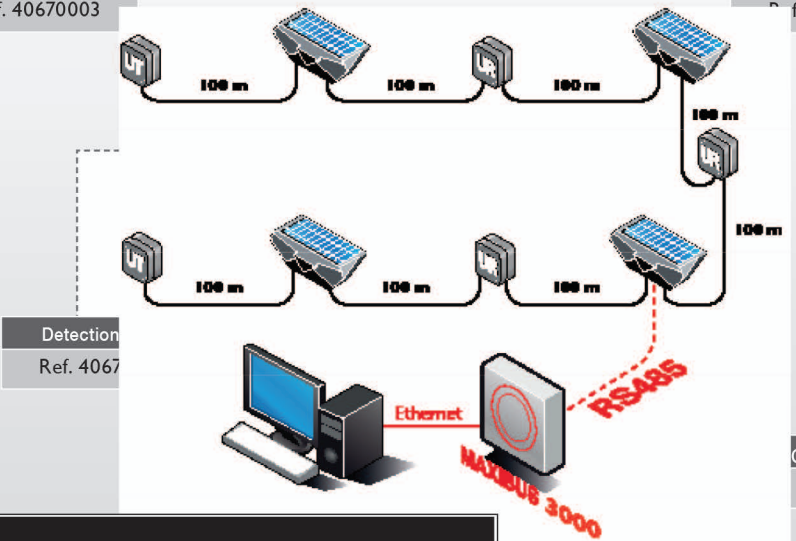


Link/Termination Unit
UT / UR
Ref. 40670003

Control Unit
UG
Ref. 40670002



System Components

- 40670002 Control Unit Solar Powered (Maximum 16 per loop) UG
- 40670003 Termination / Link Unit - UR/UT
- 40670013 100m roll of detector cable including 40 sensors (black)
- 93408901 100m roll of detector cable with 40 reinforced sensors
- 82200148 Metallic tie wraps (bag of 100)
- 93375007 Tie wraps - 26A1010 (bag of 1000) - 1 bag for 2 rolls of cable
- 24-92079-100 Stainless steel heavy duty metal tie gun for G-Fence
- 35209301 Lightning surge protection. Wired on the RS 485 between Maxibus hub and Control Unit (UG)

Network Interface Accessories

- 30792001 UNIVERSAL MAXIBUS 2 comm port (MODBUS + TCP IP outputs) 1 to 8 extension cards; 8-relays outputs (optional)
- 30704002 UNIVERSAL MAXIBUS 4 comm port (1 to 4 ports when TCP IT outputs is used or 1 to 3 ports when MODBUS RTU outputs used) for 1 to 8 extension cards 8-relays outputs (optional)
- 30792011 UNIVERSAL MAXIBUS 2 comm port (MODBUS + TCP IP outputs) for 1 to 16 extension cards 8-relay outputs (optional)
- 30792012 UNIVERSAL MAXIBUS 4 comm port (1 to 4 ports when TCP IP outputs used or 1 to 3 ports when MODBUS RTU outputs used) for 1 to 16 extension cards 8-relays outputs (optional)
- 38703901 Graphical set-up tool (Mandatory with G-FENCE 3000 to set-up and create zones)
- 35588419 8 relay extension card (installed in factory)

Technical Specifications

Power supply	Solar panel and battery pack in each Control Unit (UG)		
Alarm information	Control Unit (UG)	Detection zones	System
	• Tamper • Low battery • Input contact AUX.1 • Input contact AUX.2	1 intrusion per detection zone	Cutting of cable Cutting of the Bus
Alarm outputs	• 136 relays • RS485 port, ModBus protocol • IP connection, ModBus TCP protocol		
Operating temperature	From -40°F to 158°F (-40°C to 70°C)*		
Electromagnetic compatibility	Compliant with European standards (label CE)		
Maximum number of Control Units per MAXIBUS 3000 G-GENCE	16 x 4		
Maximum length of protection per MAXIBUS 3000 G-FENCE	8 miles (13km)		

Seal of the retailer

In order to continuously ensure the high standard of quality and performance of our products, we reserve the right to modify the present technical data without notification.



Perimeter Intrusion Detection Systems

G-FENCE 3000

Fence-mounted detection system



- Detects cutting, climbing and/or lifting of fence
- Precise location of intrusion to within 10 ft. (3 m)
- Up to 8 miles (13km) of protection per system
- Functionality with Protech's MAXIBUS headend



Intrusion Localization

accelerometer
technology



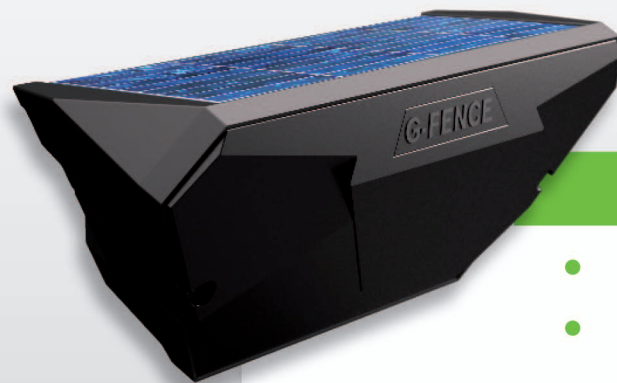
Protech-VideoWave – 7493 Trans-Canada Hwy, Suite #103
St-Laurent, Quebec – H4T 1T3 CANADA – Toll Free : 1-855-789-0820
Phone : (514) 789-0874 – Fax : (514) 789-0878 – Email : info@protechvideowave.com

www.protechvideowave.com

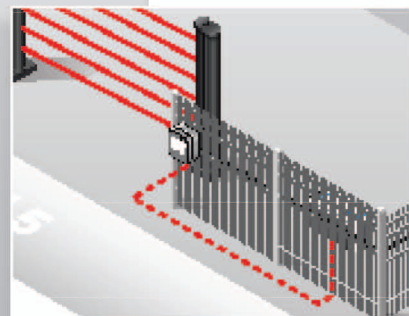
NC110-ENV2.0 02.18

G-FENCE detects attempts to cut, climb and/or lift the fence. Special algorithms eliminate disturbances caused by the environment such as wind or rain, and vibrations caused by passing vehicles.

Control units are resistant to extreme environmental conditions (like heat, cold, humidity)

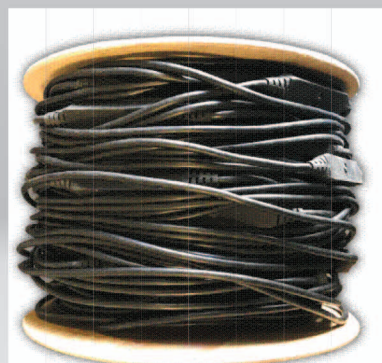


Control Unit (UG)

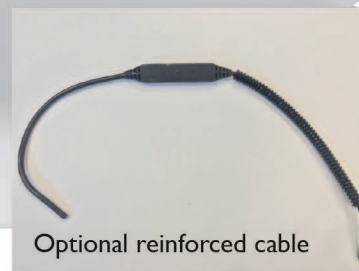


Solar Powered

- **Integrated** solar panel
- **Advanced** intrusion detection algorithms that **minimize** nuisance alarms
- **Up to 656 ft. (200m)** of protection coverage per Control Unit (UG)
- **Two (2)** auxiliary inputs per Control Unit for external alarms



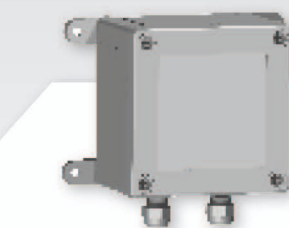
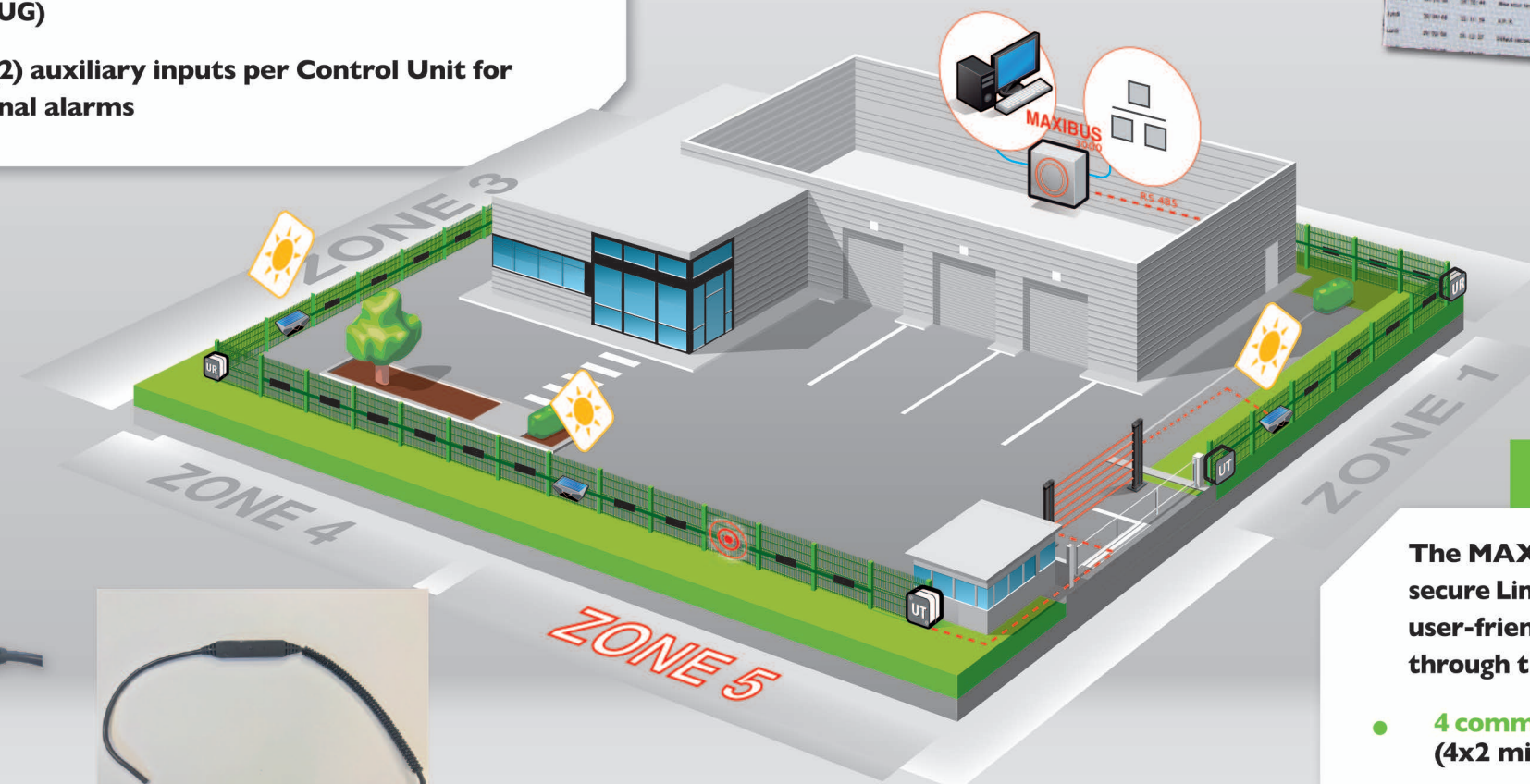
Accelerometer



Optional reinforced cable

- **Digital** accelerometer sensors provide a wide range of sensitivity settings
- **Each sensor** is equipped with its own signal processing algorithm that distributes intelligence through the entire cable.
- **Robust** cable is resistant to bending and sustained pulling
- **Optional** reinforced cable and sensors for harsh environments - concertina/barbed wired, challenging vegetation, etc.

Distributed Intelligence



Link/Termination Unit (UR/UT)

- **Integrated LED** on each sensor: simplifies set-up and maintenance by indicating and identifying location of errors due to damaged cable, wiring issues, etc.
- **Precise** location of cable cut to **within 10 ft. (3 m)**

Easy Installation and Maintenance

Integrated Mapping

Graphic software for configuration and maintenance



- **Simple** and user-friendly set-up of detection zones (up to **4 communication ports** x **128 zones**)
- **Integrated** event log (last **1000 events**)
- **Visual** and precise location of intrusions to **10 ft. (3m)**

Maxibus 3000 : IP Technology

The MAXIBUS 3000 is equipped with an **Ethernet connection**. A secure Linux operating system makes the interface faster and more user-friendly. Each system can be configured locally or remotely through the web server.

- **4 communication ports**: up to **8 miles (13km)** from one Maxibus (4x2 miles (3200m))
- **Redundancy** of all alarm information in closed loop configuration
- **Compatible** with **Milestone**, **Genetec** and other leading Video Management Systems